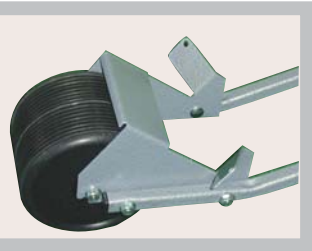


# The TS-1 Family of Golf Bag Carriers



The TS-1 family of Motorized Golf Bag Carriers has evolved into the most feature packed, yet economical product offering in its class. The convenient one piece fold-a-way design is now available in three versions, each offering exceptional value and utility. The entry level TS-1 with finger tip variable speed control and clutch drive train has established itself as an industry leader.

Handle controls on the TS-1 consist of a separate on/off switch and an easy access control knob for precise setting of traverse speed. The TS-1 Distance features a touch sensitive control pad which enables speed adjustment and distance timer settings as well as an illuminated display. The TS-1 Dynabrake has a unique braking system activated from the panel.



The TS-1 Dyna-Brake and Distance models embody ball bearing races in the front wheel which is housed in a deluxe bag support bracket with facility to attach a bungee strap if required.

An ingenious rear stabilizing wheel - "Hilltamer" - is standard on the TS-1 Distance, giving spring assisted stability on all terrain. The Hilltamer is available for all other models as an accessory.

*See over for full feature comparisons*

**U.S.A**  
**1-800-508-5408**

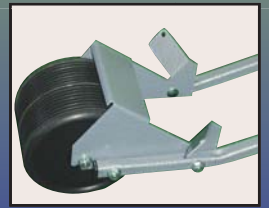


**Canada**  
**1-800-267-0098**

**PARADIGM SPORTS** 

4626 Burgoyne Street, Mississauga, Ontario, Canada L4W 1G1  
e-mail: [paradigm@kaddy.com](mailto:paradigm@kaddy.com)

# TS-1 Feature Comparison



TS-1 Models Available

|  | TS-1 | Dyna-Brake | Distance |
|--|------|------------|----------|
| <b>One piece fold-a-way.</b>           | ★    | ★          | ★        |
| <b>Welded Steel frame.</b>             | ★    | ★          | ★        |
| <b>Variable speed control.</b>         | ★    | ★          | ★        |
| <b>Separate power switch.</b>          | ★    | ★          |          |
| <b>Touch pad controls.</b>             |      |            | ★        |
| <b>Distance timer</b>                  |      |            | ★        |
| <b>Clutch drive.</b>                   | ★    |            |          |
| <b>Differential drive.</b>             |      | ★          | ★        |
| <b>Full time free wheel.</b>           | ★    |            |          |
| <b>Selectable free wheel.</b>          |      | ★          | ★        |
| <b>Braking resistance downhill.</b>    |      |            | ★        |
| <b>Full Dynamic Braking</b>            |      | ★          |          |
| <b>140 watt motor.</b>                 | ★    |            |          |
| <b>180 watt motor.</b>                 |      | ★          | ★        |
| <b>Plain bearing front wheel.</b>      | ★    |            |          |
| <b>Ball bearing front wheel.</b>       |      | ★          | ★        |
| <b>Stainless steel axles.</b>          | ★    | ★          | ★        |
| <b>Deluxe lower bag support.</b>       |      | ★          | ★        |
| <b>Quick release rear wheels.</b>      | ★    | ★          | ★        |
| <b>Tough hammertone finish.</b>        | ★    | ★          | ★        |
| <b>Battery &amp; charger included.</b> | ★    | ★          | ★        |
| <b>Rear stabilizing wheel</b>          |      |            | ★        |